

LEGAL DESCRIPTION
EXHIBIT "A"

TRACT 13 NE DECKER ROAD

A tract of land situated within the SW1/4 of Section 12 and the N1/2 of Section 13, Township 57 North, Range 84 West, 6th P.M., Sheridan County, Wyoming, as shown on EXHIBIT "B" attached hereto and by this reference made a part hereof; being more particularly described as follows:

Beginning at the NE corner of Section 13, thence S 0°12'3" E, 806.56 feet, along the east line of said section; thence S 86°55'12" W, 4263.39 feet, to a point on the easterly right-of-way line of State Highway 338; thence along said right-of-way line, N 23°15'50" E, 292.77 feet; thence entering a spiral-curve-spiral, the entrance spiral having a chord bearing of N 20°31'48" W, 375.00 feet; thence through a curve concave to the east, having a radius of 960.92 feet, a central angle of 51°54'41", an arc length of 870.62 feet, a chord bearing of N 12°2'23" E, and a chord length of 841.14 feet; thence N 51°55'48" W, 84.88 feet; thence through a curve concave to the southeast, having a radius of 1045.92 feet, a central angle of 15°15'13", an arc length of 278.45 feet, a chord bearing of N 46°8'38" E, and a chord length of 277.63 feet; thence through a portion of the exit spiral with a chord bearing of N 59°16'27" E, 263.00 feet; thence departing from said right-of-way, S 1°8'18" E, 1138.38 feet, along the east line of said SW 1/4, to the N1/4 corner of said Section 13; thence along the north line of said Section, N 84°54'3" E, 3959.69 feet, to the Point of Beginning.

Containing 85.26 acres, more or less, and subject to any prior recorded easements, exceptions, restrictions or conveyances.

The basis of bearing is Wyoming State Plane Coordinate System, NAD 83, East Central Zone; Scale Factor: 1.000233; all units are U.S. survey feet; distances are ground.



EXHIBIT A

TRACT 13 NE DECKER ROAD

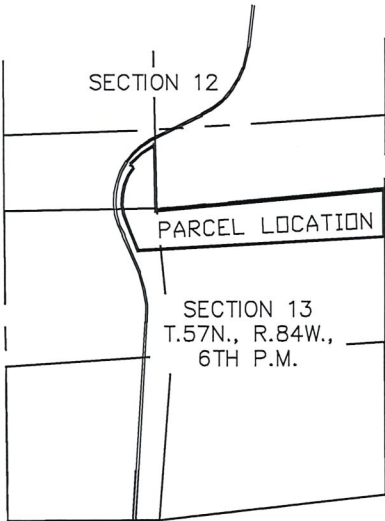
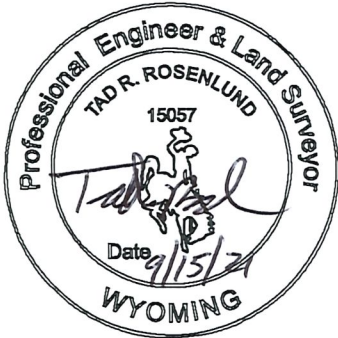
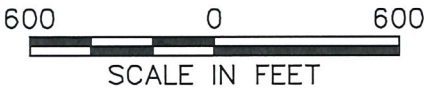
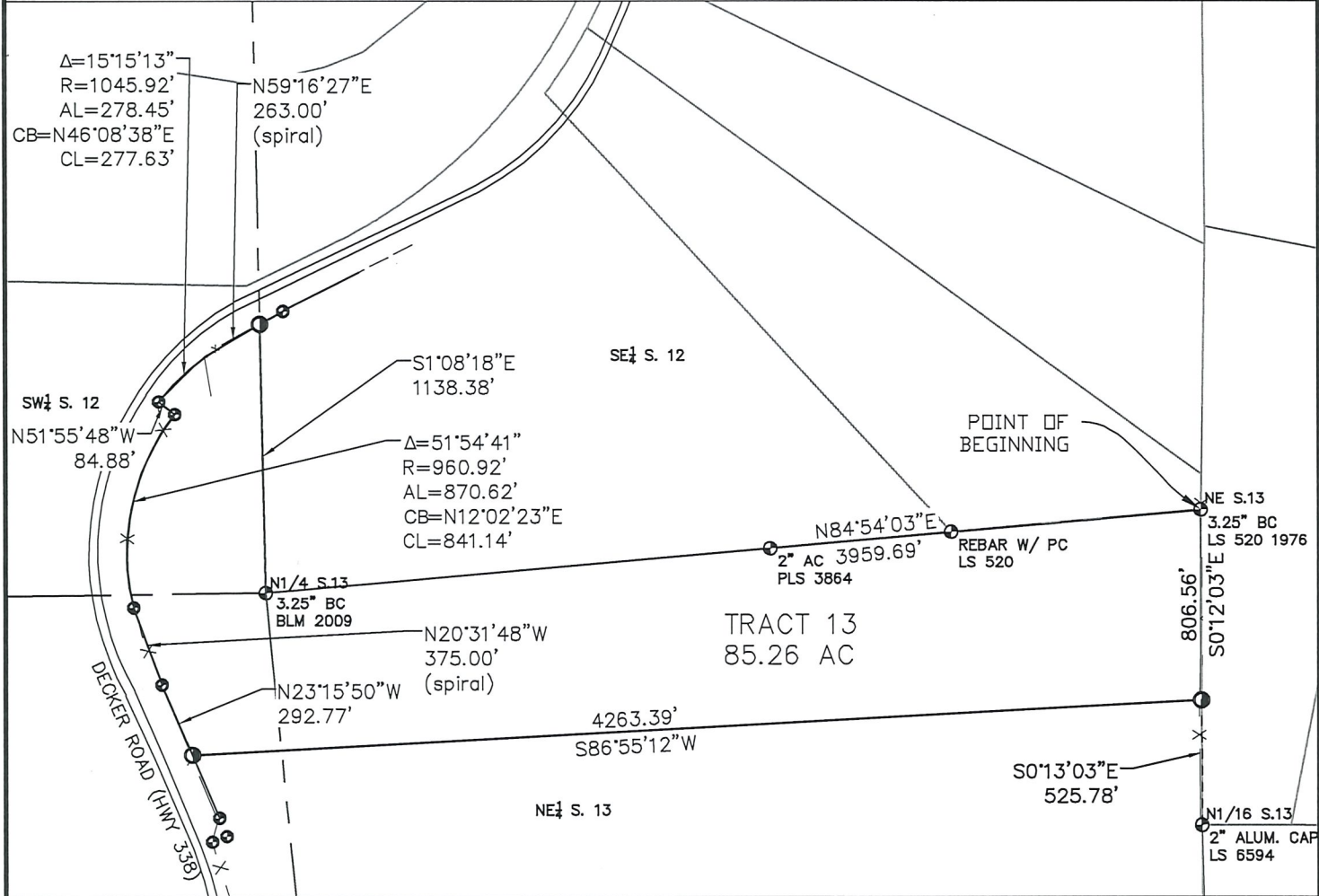
SITUATED IN THE SW 1/4 OF SECTION 12 AND THE N1/2 OF SECTION 13, T57N, R84W, 6TH P.M., SHERIDAN COUNTY, WYOMING

PROJECT BLACK GOLD
DATE 9/15/2021

EXHIBIT A - 1 of 1



EXHIBIT "B"



SURVEYOR'S CERTIFICATE:
I, TAD R. ROSENLUND, DO HEREBY CERTIFY THAT THIS PLAT
WAS MADE FROM AN ACTUAL FIELD SURVEY PERFORMED BY ME
OR UNDER MY DIRECT SUPERVISION AND THAT IT CORRECTLY
SHOWS THE LOCATION TO THE BEST OF MY KNOWLEDGE.

LEGEND

- SECTION LINE
- INTERIOR SECTION LINE
- ROAD
- FENCE LINE
- ADJACENT PARCEL LINE
- FOUND 3.25" BRASS ROW MONUMENT
- FOUND MONUMENT AS DESCRIBED
- SET 2" ALUMINUM CAP ON 5/8" REBAR

LOCATION MAP
N.T.S.

The basis of bearing is Wyoming State Plane
Coordinate System, NAD 83, East Central Zone;
PAF: 1.000233; all units are U.S. survey feet.
Distances are at ground.



EXHIBIT B
TRACT 13 NE DECKER ROAD
SITUATED IN THE SW 1/4 OF SECTION 12 AND THE N1/2 OF
SECTION 13, T57N, R84W, 6TH P.M., SHERIDAN COUNTY, WYOMING

PROJECT BLACK GOLD
DATE 9/15/2021
EXHIBIT B - 1 of 1