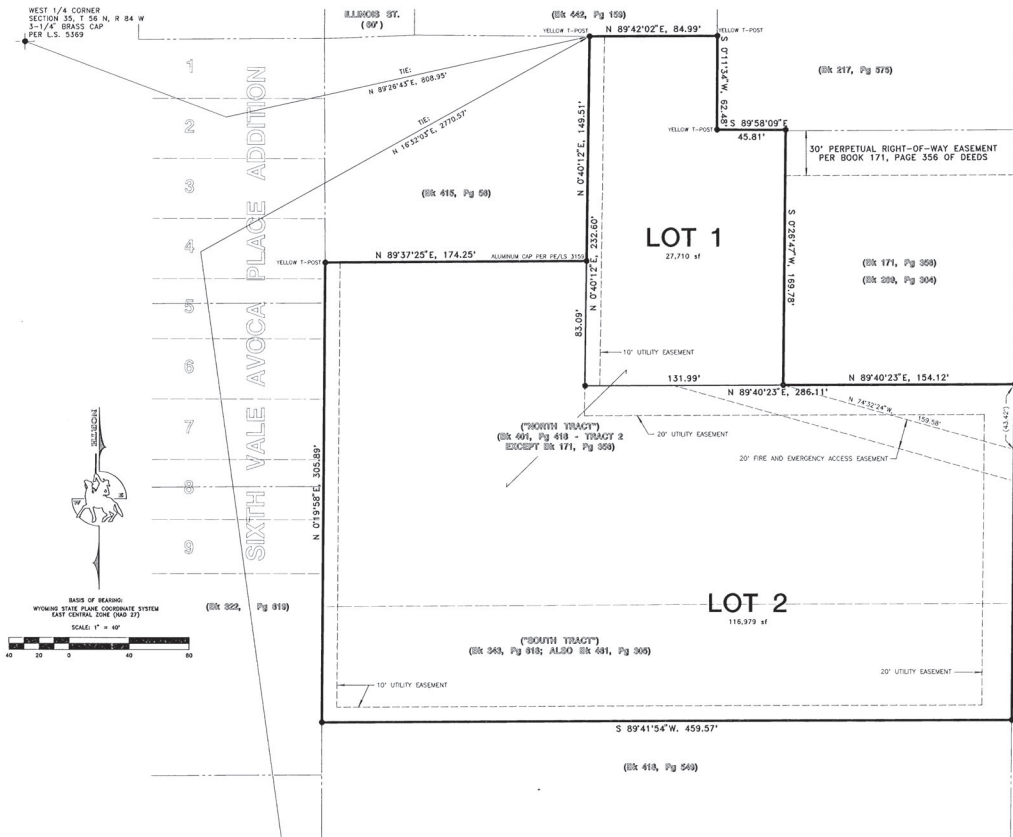


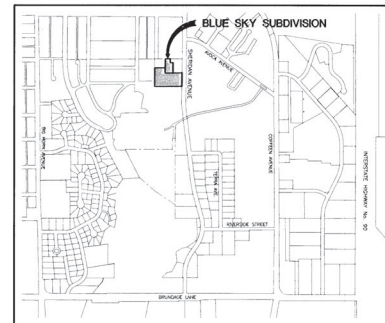
FINAL PLAT OF BLUE SKY SUBDIVISION

WITHIN

THE NW1/4 SW1/4 OF SECTION 35
TOWNSHIP 56 NORTH, RANGE 84 WEST
OF THE 6TH PRINCIPAL MERIDIAN
CITY OF SHERIDAN, SHERIDAN COUNTY, WYOMING
AREA: 144,689 SQUARE FEET



SHERIDAN AVENUE (70')



EXECUTED THIS 7th DAY OF MARCH, 2005.

BY: *Gerald K. Pelesky*
GERALD K. PELESKY
TRUSTEE OF THE GERALD K. PELESKY TRUST DATED OCT. 27, 1995
(OWNER)

BY: *Delores E. Pelesky*
DELORES E. PELESKY
TRUSTEE OF THE GERALD K. PELESKY TRUST DATED OCT. 27, 1995
(OWNER)

STATE OF WYOMING } ss
COUNTY OF SHERIDAN }

THE FOREGOING INSTRUMENT WAS ACKNOWLEDGED BEFORE ME THIS 7th DAY OF MARCH, 2005, BY GERALD K. PELESKY AND DELORES E. PELESKY, TRUSTEES OF THE GERALD K. PELESKY TRUST UNDER AGREEMENT DATED OCTOBER 27, 1995.

MY COMMISSION EXPIRES: MAY 18, 2008



Tom Mentock
NOTARY PUBLIC

CERTIFICATE OF DEDICATION BLUE SKY SUBDIVISION

KNOW ALL MEN BY THESE PRESENTS THAT THE FOREGOING SUBDIVISION, AS IT IS DESCRIBED AND AS IT APPEARS ON THIS PLAT, IS MADE WITH THE FREE CONSENT AND IN ACCORDANCE WITH THE DESIRES OF THE UNDERSIGNED OWNERS, PROPRIETORS OR PARTIES OF INTEREST IN THE LAND SHOWN ON THIS PLAT, HEREIN DESIGNATED AS BLUE SKY SUBDIVISION, LOCATED WITHIN THE NORTHWEST QUARTER OF THE SOUTHWEST QUARTER (NW1/4SW1/4) OF SECTION 35, TOWNSHIP 56 NORTH, RANGE 84 WEST, OF THE SIXTH PRINCIPAL MERIDIAN, CITY OF SHERIDAN, SHERIDAN COUNTY, WYOMING, BEING MORE PARTICULARLY DESCRIBED AS FOLLOWS:

BEGINNING AT A POINT LOCATED IN 89°29'45"E, 808.95 FEET FROM THE WEST ONE-QUARTER (NW1/4) CORNER OF SAID SECTION 35, SAID POINT BEING THE POINT OF BEGINNING OF THAT TRACT AS DESCRIBED IN SHERIDAN COUNTY BOOK 401 OF DEEDS AT PAGE 418 (TRACT 2); THENCE ALONG THE BOUNDARY OF SAID TRACT N 89°29'45"E, 84.99 FEET; THENCE CONTINUING ALONG SAID BOUNDARY S 89°50'09"E, 45.81 FEET TO THE NORTHWEST CORNER OF THAT TRACT OF LAND AS DESCRIBED IN SHERIDAN COUNTY BOOK 171 OF DEEDS AT PAGE 556; THENCE ALONG THE WEST LINE OF SAID TRACT S 72°42'47"W, 159.18 FEET TO THE SOUTHWEST CORNER OF SAID TRACT; THENCE THE SOUTH LINE OF SAID TRACT N 89°40'23"E, 154.12 FEET TO A POINT ON THE WEST RIGHT OF WAY LINE OF SHERIDAN AVENUE; THENCE ALONG SAID WEST RIGHT OF WAY LINE S 72°42'47"W, 223.15 FEET TO THE SOUTHEAST CORNER OF THAT TRACT OF LAND AS DESCRIBED IN SHERIDAN COUNTY BOOK 345 OF DEEDS AT PAGE 618; THENCE ALONG THE SOUTH LINE OF SAID TRACT S 89°41'54"W, 459.57 FEET TO THE SOUTHWEST CORNER OF SAID TRACT; THENCE N 01°52'58"E, 505.89 FEET TO THE NORTHWEST CORNER OF THAT TRACT OF LAND AS DESCRIBED IN SHERIDAN COUNTY BOOK 401 OF DEEDS AT PAGE 418 (TRACT 2); THENCE ALONG THE BOUNDARY OF SAID TRACT N 89°37'25"E, 174.25 FEET; THENCE CONTINUING ALONG SAID TRACT N 04°01'12"E, 149.51 FEET TO THE POINT OF BEGINNING.

SAID BLUE SKY SUBDIVISION CONTAINING 144,689 SQUARE FEET, MORE OR LESS,

THAT THE UNDERSIGNED OWNERS, PROPRIETORS OR PARTIES OF INTEREST DO HEREBY DEDICATE FOR PUBLIC USE TO THE CITY OF SHERIDAN AND ITS LICENSEES ALL STREETS, ALLEYS, EASEMENTS AND OTHER PUBLIC LANDS WITHIN THE BOUNDARY LINES OF THE SUBDIVISION, FOR PURPOSES AS INDICATED ON THIS PLAT, AND NOT ALREADY OTHERWISE DEDICATED FOR PUBLIC USE, AND THAT UTILITY EASEMENTS, AS DESIGNATED ON THIS PLAT, ARE HEREBY DEDICATED FOR PUBLIC USE TO THE CITY OF SHERIDAN AND ITS LICENSEES TO ACCOMMODATE THE FLOW OR STORAGE OF STORM WATERS AND SHALL BE KEPT FREE OF ALL STRUCTURES OR OTHER IMPEDIMENTS NOT RELATED TO DRAINAGE.

THAT DRAINAGE EASEMENTS, AS DESIGNATED ON THIS PLAT, ARE HEREBY DEDICATED FOR PUBLIC USE TO THE CITY OF SHERIDAN AND ITS LICENSEES TO ACCOMMODATE THE FLOW OR STORAGE OF STORM WATERS AND SHALL BE KEPT FREE OF ALL STRUCTURES OR OTHER IMPEDIMENTS NOT RELATED TO DRAINAGE.

ALL RIGHTS UNDER AND BY VIRTUE OF THE HOMESTEAD EXEMPTION LAWS OF THE STATE OF WYOMING ARE HEREBY WAIVED AND RELEASED.

EXECUTED THIS 7th DAY OF MARCH, 2005.

BY: *Delores E. Pelesky*
DELORES E. PELESKY
TRUSTEE OF THE DELORES E. PELESKY TRUST DATED OCT. 27, 1995
(OWNER)

BY: *Gerald K. Pelesky*
GERALD K. PELESKY
TRUSTEE OF THE DELORES E. PELESKY TRUST DATED OCT. 27, 1995
(OWNER)

STATE OF WYOMING } ss
COUNTY OF SHERIDAN }

THE FOREGOING INSTRUMENT WAS ACKNOWLEDGED BEFORE ME THIS 7th DAY OF MARCH, 2005, BY DELORES E. PELESKY AND GERALD K. PELESKY, TRUSTEES OF THE DELORES E. PELESKY TRUST UNDER AGREEMENT DATED OCTOBER 27, 1995.

MY COMMISSION EXPIRES: MAY 18, 2008



Tom Mentock
NOTARY PUBLIC

DIRECTOR OF PUBLIC WORKS CERTIFICATE OF APPROVAL

DATA ON THIS PLAT APPROVED THIS 15th DAY OF March, 2005, BY THE DIRECTOR OF PUBLIC WORKS OF SHERIDAN, WYOMING.

William A. Mentock
DIRECTOR OF PUBLIC WORKS
CITY OF SHERIDAN

SHERIDAN PLANNING COMMISSION CERTIFICATE OF REVIEWAL

REVIEWED BY THE CITY OF SHERIDAN PLANNING COMMISSION THIS 14th DAY OF March, 2005.

Wayne Blank
ATTES: VICE-CHAIRMAN

Mindy Wild
CHAIRMAN

CITY COUNCIL OF SHERIDAN CERTIFICATE OF APPROVAL

APPROVED BY THE CITY COUNCIL OF THE CITY OF SHERIDAN, THIS 21st DAY OF March, 2005.

Wayne Blank
ATTES: CITY CLERK

Wayne Blank
MAYOR

CERTIFICATE OF RECORDER

STATE OF WYOMING } ss
COUNTY OF SHERIDAN }

I HEREBY CERTIFY THAT THE ABOVE PLAT WAS FILED FOR RECORD IN MY OFFICE AT 1:00 O'CLOCK P.M. ON March 25, 2005, AND FILED IN DRAWER B, PLAT NUMBER 43

INSTRUMENT No. 503449 FEE 50.00

Debbie Kallish
COUNTY CLERK

Debbie Kallish
DEPUTY COUNTY CLERK

CERTIFICATE OF SURVEYOR

STATE OF WYOMING } ss
COUNTY OF SHERIDAN }

I, WILLIAM A. MENTOCK, DO HEREBY CERTIFY THAT I AM A REGISTERED PROFESSIONAL ENGINEER AND LAND SURVEYOR, LICENSED UNDER THE LAWS OF THE STATE OF WYOMING, THAT THIS PLAT IS A TRUE, CORRECT AND COMPLETE PLAT OF BLUE SKY SUBDIVISION, AS LAID OUT, PLATTED, DEDICATED AND SHOWN HEREON, THAT THIS PLAT WAS MADE FROM AN ACCURATE SURVEY OF SAID PROPERTY CONDUCTED BY ME OR UNDER MY SUPERVISION AND CORRECTLY SHOWS THE LOCATION AND DIMENSIONS OF ALL LOTS, EASEMENTS AND STREETS OF SAID SUBDIVISION IN COMPLIANCE WITH CITY OF SHERIDAN REGULATIONS GOVERNING THE SUBDIVISION OF LAND.

William A. Mentock
WYOMING



PREPARED FOR:
GERALD K. PELESKY
1628 HOLLY PONDS DRIVE
SHERIDAN, WY 82801
(307) 674-4138

03415PLT.dwg

FEBRUARY 25, 2005

SHEET 1 OF 1

MENTOCK ENGINEERING
CONSULTING ENGINEERS AND LAND SURVEYORS
1030 NORTH MAIN ST.
TAYLOR PLACE No. 2
SHERIDAN, WY 82801
Phone 307-674-4224
Fax 307-672-9492

Partial Variation 3.5-06 BK 472 1/2 R66

B-43