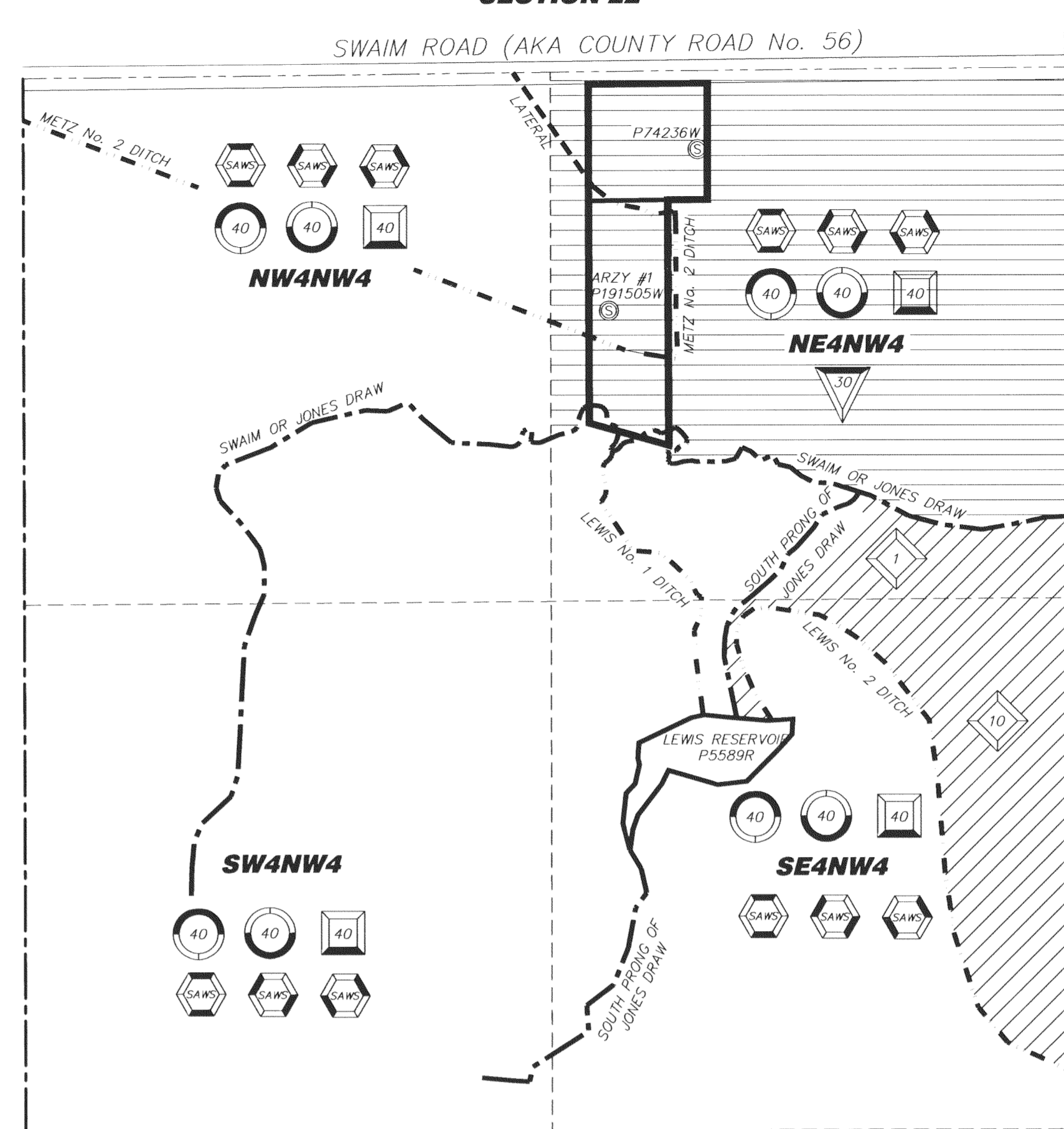


T55N R84W SECTION 22

SWAIM ROAD (AKA COUNTY ROAD No. 56)



WATER RIGHTS OF RECORD MAP

SCALE: 1"=300'

LEGEND

- DRAW
- DITCH
- SECTION LINE
- INTERIOR SECTION LINE
- PROPERTY LINE



SCALE: 1"=50'

BASIS OF BEARINGS IS THE WYOMING COORDINATE SYSTEM NAD 1983, EAST CENTRAL ZONE

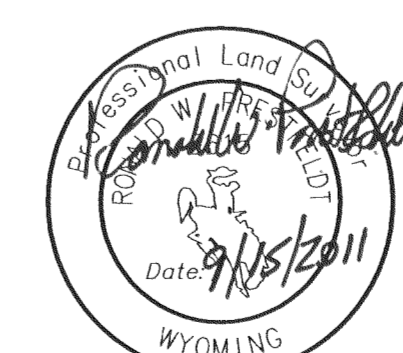
DISTANCES ARE SURFACE

5' CONTOUR INTERVAL

NOTICE: This plan is an image or reproduction of the original as it is recorded in the Sheridan County Clerk's Office. It is not a certified, complete or authoritative depiction of current property lines, easements or rights-of-way. Delineations, measurements or representations may have occurred since the original plan was recorded.

SURVEYOR'S CERTIFICATE

I, RONALD W. PRESTFELDT, A DULY REGISTERED LAND SURVEYOR IN THE STATE OF WYOMING, DO HEREBY CERTIFY THAT THIS MAP WAS PREPARED BY ME OR UNDER MY DIRECT SUPERVISION FROM RECORDS ON FILE AT THE WYOMING STATE ENGINEERS OFFICE, RASTER IMAGE OF SHERIDAN COUNTY MOSAIC 2009 DIGITAL PHOTO, FIELD SURVEYS OF PROPERTY LINES AND WELL LOCATIONS AND THAT IT CORRECTLY SHOWS THE LOCATIONS AT THE TIME OF THE SURVEY.



CERTIFICATE IS VALID ONLY IF PRINT HAS ORIGINAL SIGNATURE OF SURVEYOR SIGNED AND DATED

APPROVED: _____ ALLAN CUNNINGHAM, EX-OFFICIO SECRETARY TO THE BOARD

MAP TO ACCOMPANY PETITION TO THE STATE BOARD OF CONTROL FOR:

- VOLUNTARY ABANDONMENT FOR A PORTION OF LANDS UNDER THE COLORADO COLONY DITCH COMPANY, TERRITORIAL APPROPRIATION, PROOF NO. 736, ORDER RECORD 1, PAGE 240, DIVERTING FROM LITTLE GOOSE CREEK THROUGH THE COLORADO COLONY DITCH, WITH A PRIORITY OF JULY 04, 1883.
- VOLUNTARY ABANDONMENT FOR A PORTION OF LANDS HAVING SUPPLEMENTAL SUPPLY UNDER THE COLORADO COLONY DITCH COMPANY APPROPRIATION, PROOF NO. 3460, PERMIT NO. 445E, DIVERTING FROM CROSS CREEK, TRIBUTARY BIG GOOSE CREEK THROUGH THE MOUNTAIN SUPPLY DITCH, WITH A PRIORITY OF JUNE 15, 1899.
- VOLUNTARY ABANDONMENT FOR A PORTION OF LANDS HAVING SECONDARY SUPPLY UNDER THE W. S. METZ APPROPRIATION, PROOF NO. 20660, CERTIFICATE RECORD NO. 47, PAGE 604, PERMIT NO. 4186E, ORDER RECORD 7, PAGE 711, DIVERTING FROM BIG HORN RESERVOIR (P1352R) TRIBUTARY CROSS CREEK, THROUGH THE ENLARGED COLORADO COLONY DITCH, WITH A PRIORITY OF JULY 10, 1908.
- VOLUNTARY ABANDONMENT FOR A PORTION OF LANDS HAVING SECONDARY SUPPLY UNDER THE W. S. METZ APPROPRIATION, PROOF NO. 15318, CERTIFICATE RECORD NO. 39, PAGE 379, PERMIT NO. 14903, ORDER RECORD 5, PAGE 421, DIVERTING FROM METZ No. 2 RESERVOIR (P2868R) TRIBUTARY LITTLE GOOSE CREEK, THROUGH THE METZ No. 2 DITCH, WITH A PRIORITY OF NOV. 2, 1917.

AND

ARZY MINOR SUBDIVISION WATER DISTRIBUTION PLAN

PORTION OF THE NE1/4NW1/4, SECTION 22, TOWNSHIP 55 NORTH, RANGE 84 WEST, 6TH PRINCIPAL MERIDIAN, SHERIDAN COUNTY, WYOMING

PETITIONER/SUBDIVIDER: JOSEPH W. AND MARSHA M. ARZY 6030 BIG HORN AVENUE SHERIDAN, WY 82801

NOTES

- ARZY MINOR SUBDIVISION CONSISTS OF 4.68 ACRES WITH LOT 1 CONTAINING 2.66 ACRES AND HAVING 2.37 ACRES FOR IRRIGATION. LOT 2 CONTAINS 2.02 ACRES AND HAVING 2.02 ACRES FOR IRRIGATION.
- THE MEANS OF CONVEYANCE FOR THE LOT 1 WATER DISTRIBUTION PLAN WILL BE FROM SWAIM OR JONES DRAW AND METZ No. 2 DITCH AND WATER WILL BE PUMPED FROM ARZY PUMP POINT TO THE CISTERN WHERE THE WATER WILL BE DISTRIBUTED BY HOSE AND SPRINKLER FROM THE CISTERN.
- THE MEANS OF CONVEYANCE FOR THE LOT 2 WATER DISTRIBUTION PLAN WILL BE FROM THE LOT 2 PUMP POINT AND PUMPED FROM A LATERAL OF COLORADO COLONY DITCH WHERE THE WATER WILL BE DISTRIBUTED BY HOSE AND SPRINKLER FROM THE LOT 2 PUMP POINT. ANY FUTURE DISTRIBUTION WITHIN LOT 2 CAN NOT BE DETERMINED AT THIS TIME AS IT IS AN EMPTY LOT.
- THE ARZY PUMP POINT AND LOT 2 PUMP POINT CAN ONLY BE USED WHEN IT IS IN PRIORITY AND WHEN WATER FROM THE COLORADO COLONY DITCH IS BEING DELIVERED VIA SWAIM OR JONES DRAW.
- THIS PUMP DIVERSION MAY REQUIRE A METER AS DEEMED NECESSARY BY THE STATE ENGINEER OFFICE WATER DIVISION II SUPERINTENDENT.
- SECONDARY SUPPLY OF WATER FROM BIG HORN RESERVOIR (P1352R) AND METZ RESERVOIR (P2868R) SHALL BE USED FOR IRRIGATION.
- EXISTING DITCHES LOCATED ON ARZY MINOR SUBDIVISION SHALL BE USED AS A MEANS OF CONVEYANCE FOR IRRIGATION AND WILL NOT IMPEDE OTHER USERS.

WATER RIGHTS

FOR SIMPLIFICATION ONLY THE LANDS TO BE AFFECTED IN THE NW1/4 OF SECTION 22, T55N R84W ARE DESCRIBED AND SHOWN.

LANDS UNDER THE COLORADO COLONY DITCH COMPANY, TERRITORIAL APPROPRIATION, PROOF NO. 736, ORDER RECORD 1, PAGE 240, DIVERTING FROM LITTLE GOOSE CREEK THROUGH THE COLORADO COLONY DITCH, WITH A PRIORITY OF JULY 04, 1883, FOR IRRIGATION - 4.40 ACRES THIS SUBDIVISION.

LANDS HAVING SUPPLEMENTAL SUPPLY UNDER THE COLORADO COLONY DITCH COMPANY APPROPRIATION, PROOF NO. 3460, PERMIT NO. 445E, DIVERTING FROM CROSS CREEK, TRIBUTARY BIG GOOSE CREEK THROUGH THE MOUNTAIN SUPPLY DITCH, WITH A PRIORITY OF JUNE 15, 1899, FOR IRRIGATION - 4.40 ACRES THIS SUBDIVISION.

LANDS HAVING SECONDARY SUPPLY UNDER THE W. S. METZ APPROPRIATION, PROOF NO. 20660, CERTIFICATE RECORD NO. 47, PAGE 604, PERMIT NO. 4186E, ORDER RECORD 7, PAGE 711, DIVERTING FROM BIG HORN RESERVOIR (P1352R) TRIBUTARY CROSS CREEK, THROUGH THE ENLARGED COLORADO COLONY DITCH, WITH A PRIORITY OF JULY 10, 1908, FOR IRRIGATION - 4.40 ACRES THIS SUBDIVISION.

LANDS HAVING SECONDARY SUPPLY UNDER THE W. S. METZ APPROPRIATION, PROOF NO. 15318, CERTIFICATE RECORD NO. 39, PAGE 379, PERMIT NO. 14903, ORDER RECORD 5, PAGE 421, DIVERTING FROM METZ No. 2 RESERVOIR (P2868R) TRIBUTARY LITTLE GOOSE CREEK, THROUGH THE METZ No. 2 DITCH, WITH A PRIORITY OF NOV. 2, 1917, FOR IRRIGATION - 4.39 ACRES THIS SUBDIVISION.

LANDS UNDER THE SHERIDAN AREA WATER SUPPLY JOINT POWERS BOARD APPROPRIATION, PROOF NO. 3756B, CERTIFICATE RECORD NO. 81, PAGE 328, PERMIT NO. 7021E, ORDER RECORD 51, PAGE 21, DIVERTING FROM BIG GOOSE CREEK, TRIBUTARY TONGUE RIVER, THROUGH THE FIRST ENLARGEMENT OF THE SHERIDAN TOWN DITCH AND PIPELINE, WITH A PRIORITY OF OCTOBER 23, 1989, FOR MUNICIPAL, INDUSTRIAL AND DOMESTIC PURPOSES.

LANDS UNDER THE CITY OF SHERIDAN APPROPRIATION, PROOF NO. 37569, CERTIFICATE RECORD NO. 81, PAGE 329, PERMIT NO. 7022E, ORDER RECORD 51, PAGE 26, DIVERTING FROM BIG GOOSE CREEK, TRIBUTARY TONGUE RIVER, THROUGH THE SECOND ENLARGEMENT OF THE SHERIDAN TOWN DITCH AND PIPELINE, WITH A PRIORITY OF DECEMBER 20, 1991, FOR MUNICIPAL, INDUSTRIAL AND DOMESTIC PURPOSES.

LANDS UNDER THE CITY OF SHERIDAN APPROPRIATION, PROOF NO. 37570, CERTIFICATE RECORD NO. 81, PAGE 330, PERMIT NO. 7023E, ORDER RECORD 51, PAGE 31, DIVERTING FROM BIG GOOSE CREEK, TRIBUTARY TONGUE RIVER, THROUGH THE THIRD ENLARGEMENT OF THE SHERIDAN TOWN DITCH AND PIPELINE, WITH A PRIORITY OF DECEMBER 20, 1991, FOR MUNICIPAL, INDUSTRIAL AND DOMESTIC PURPOSES.

LANDS HAVING SUPPLEMENTAL SUPPLY UNDER THE VINCENT PAUL JOHNSTON APPROPRIATION, PROOF NO. 26703, PERMIT NO. 20051, DIVERTING FROM SOUTH PRONG OF JONES DRAW, TRIBUTARY OF JONES DRAW, TRIBUTARY OF LITTLE GOOSE CREEK THROUGH THE LEWIS No. TWO DITCH, WITH A PRIORITY OF APRIL 17, 1945, FOR IRRIGATION - 11 ACRES.

LANDS UNDER PROOF NO. 736; PROOF NO. 3460; PROOF NO. 15318; AND PROOF NO. 20660; FOR VOLUNTARY ABANDONMENT THIS PETITION - 0.20 ACRES.



SWAIM ROAD (AKA COUNTY ROAD No. 56)

LOT 2 ±2.02 ACRES

LOT 1 ±2.66 ACRES

LOT 2 PUMP POINT LAT: 44°43'58.59"N LONG: 106°58'01.98"W

CISTERN 1410 gal, 188 cu. ft.

ARZY PUMP POINT LAT: 44°43'57.26"N LONG: 106°57'57.09"W



PO BOX 3082 SHERIDAN, WY 82801 307-672-7415 FAX 674-5000