

WESCO ADDITION

BEING A REPLAT OF

LOT 5

WESCO SUBDIVISION

LOCATED IN THE E1/2 SE1/4 SECTION 2

T 55 N, R 84 W

SHERIDAN COUNTY, WYOMING

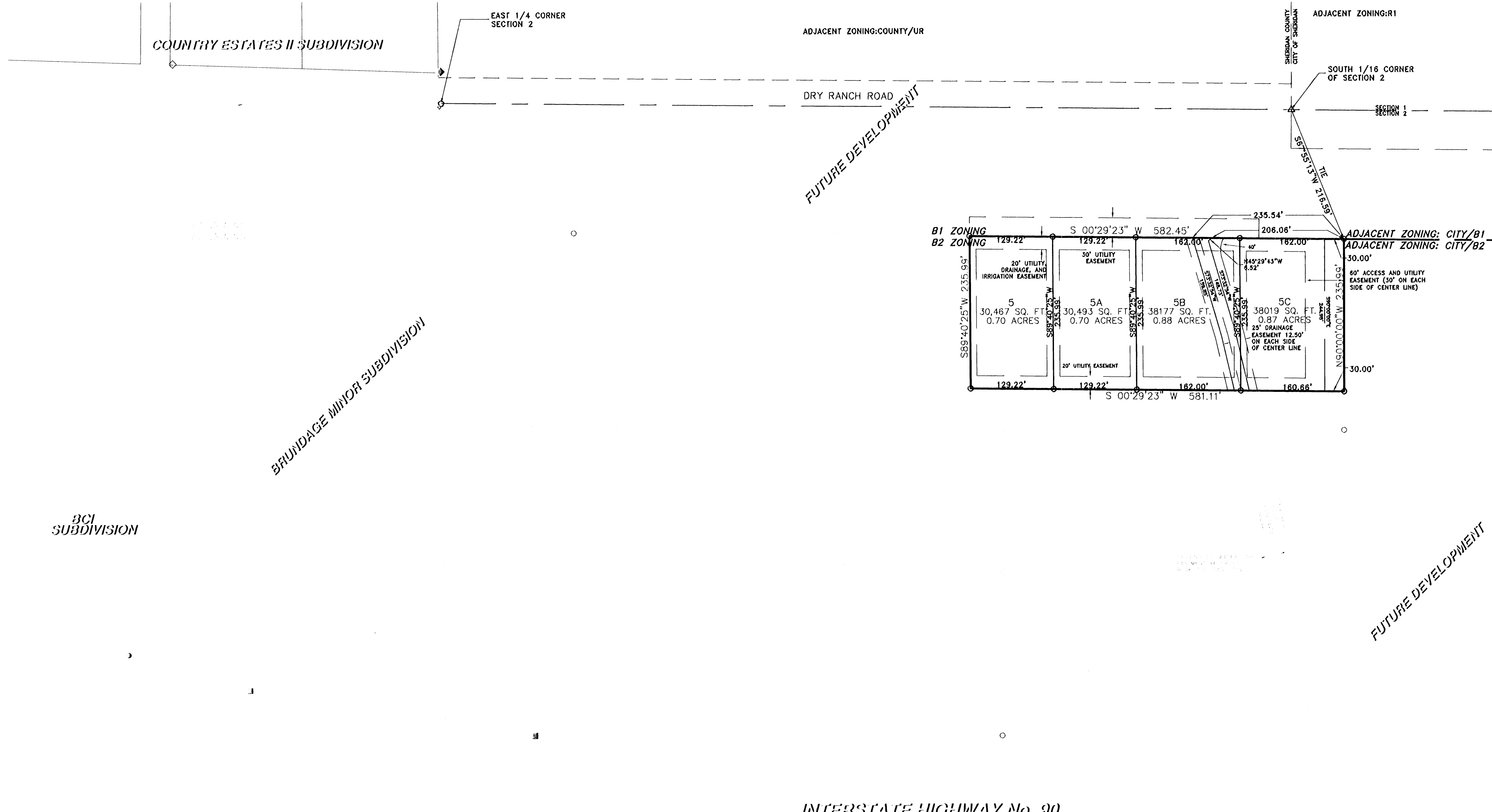
AREA = 3.15 ACRES

TOTAL NO. OF LOTS = 4



LOCATION MAP

SCALE: 1" = 1000'



CERTIFICATE OF DEDICATION

LOT 5 REPLAT WESCO SUBDIVISION

KNOW ALL MEN BY THESE PRESENTS THAT THE FOREGOING SUBDIVISION, AS IT IS DESCRIBED AND AS IT APPEARS ON THIS PLAT, IS MADE WITH THE FREE CONSENT AND IN ACCORDANCE WITH THE DESIRES OF THE UNDERSIGNED OWNERS, PROPRIETORS OR PARTIES OF INTEREST IN THE LAND SHOWN ON THIS PLAT, HEREIN DESIGNATED AS LOT 5 OF WESCO SUBDIVISION, LOCATED IN THE EAST HALF OF THE SOUTHEAST QUARTER (E1/2 SE1/4) OF SECTION 2, TOWNSHIP 55 NORTH, RANGE 84 WEST OF THE SIXTH PRINCIPAL MERIDIAN, CITY OF SHERIDAN, SHERIDAN COUNTY, WYOMING.

THAT THE UNDERSIGNED OWNERS, PROPRIETORS OR PARTIES OF INTEREST DO HEREBY DEDICATE FOR PUBLIC USE TO THE CITY OF SHERIDAN AND ITS LICENSEES ALL STREETS, ALLEYS, EASEMENTS AND OTHER PUBLIC LANDS WITHIN THE BOUNDARY LINES OF THE SUBDIVISION, FOR PURPOSES AS INDICATED ON THIS PLAT, AND NOT ALREADY OTHERWISE DEDICATED FOR PUBLIC USE, AND

THAT UTILITY EASEMENTS, AS DESIGNATED ON THIS PLAT, ARE HEREBY DEDICATED FOR PUBLIC USE TO THE CITY OF SHERIDAN AND ITS LICENSEES FOR THE PURPOSES OF INSTALLING, REPAIRING, REINSTALLING, REPLACING AND MAINTAINING SEWER LINES, WATER LINES, GAS LINES, ELECTRIC LINES, TELEPHONE LINES, CABLE TELEVISION LINES AND OTHER FORMS AND TYPES OF PUBLIC UTILITIES NOW OR HEREAFTER GENERALLY UTILIZED BY THE PUBLIC, AND

THAT DRAINAGE EASEMENTS, AS DESIGNATED ON THIS PLAT, ARE HEREBY DEDICATED FOR PUBLIC USE TO THE CITY OF SHERIDAN AND ITS LICENSEES, TO ACCOMMODATE THE FLOW OR STORAGE OF STORM WATERS AND SHALL BE KEPT FREE OF ALL STRUCTURES OR OTHER IMPEDIMENTS NOT RELATED TO DRAINAGE.

ALL RIGHTS UNDER AND BY VIRTUE OF THE HOMESTEAD EXEMPTION LAWS OF THE STATE OF WYOMING ARE HEREBY WAIVED AND RELEASED.

EXECUTED THIS 22nd DAY OF Sept, 2005.

BY: June Warren
JUNE WARREN, (OWNER)
JUNE WARREN, AUTHORIZED AGENT

STATE OF WYOMING }
COUNTY OF SHERIDAN }

THE FOREGOING INSTRUMENT WAS ACKNOWLEDGED BEFORE ME THIS

22nd DAY OF September, 2005, BY JUNE WARREN

THE AUTHORIZED AGENT FOR WESCO, LLC.

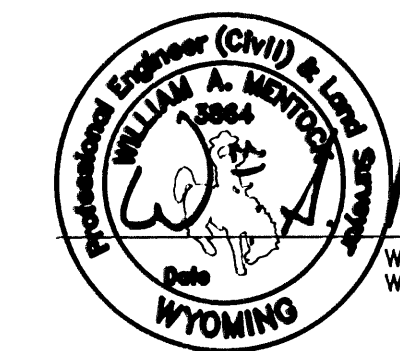
NOTARY PUBLIC



CERTIFICATE OF SURVEYOR

STATE OF WYOMING }
COUNTY OF SHERIDAN }

I, WILLIAM A. MENTOCK, DO HEREBY CERTIFY THAT I AM A REGISTERED PROFESSIONAL ENGINEER AND LAND SURVEYOR LICENSED UNDER THE LAWS OF THE STATE OF WYOMING, THAT THIS PLAT IS A TRUE, CORRECT AND COMPLETE PLAT OF WESCO ADDITION, AS LAID OUT, PLATTED, DEDICATED AND SHOWN HEREON, THAT THIS PLAT WAS MADE FROM AN ACCURATE SURVEY OF SAID PROPERTY CONDUCTED BY ME OR UNDER MY SUPERVISION AND CORRECTLY SHOWS THE LOCATION AND DIMENSIONS OF ALL LOTS, EASEMENTS AND STREETS OF SAID SUBDIVISION IN COMPLIANCE WITH CITY OF SHERIDAN REGULATIONS GOVERNING THE SUBDIVISION OF LAND.



WILLIAM A. MENTOCK
WYO P.E. & L.S. No. 3864

DIRECTOR OF PUBLIC WORKS

CERTIFICATE OF APPROVAL

DATA ON THIS PLAT APPROVED THIS 27 DAY OF Sept, 2005,
BY THE DIRECTOR OF PUBLIC WORKS OF SHERIDAN, WYOMING.

Michelle Johnson
DIRECTOR OF PUBLIC WORKS
CITY OF SHERIDAN

CITY COUNCIL OF SHERIDAN

CERTIFICATE OF APPROVAL

APPROVED BY THE CITY COUNCIL OF THE CITY OF SHERIDAN, THIS
28th DAY OF September, 2005.

ATTEST: CITY CLERK [Signature] MAYOR [Signature]

SHERIDAN PLANNING COMMISSION

CERTIFICATE OF REVIEWAL

REVIEWED BY THE CITY OF SHERIDAN PLANNING COMMISSION THIS
26th DAY OF Sept, 2005.

ATTEST: VICE-CHAIRMAN [Signature] CHAIRMAN [Signature]

CERTIFICATE OF RECORDER

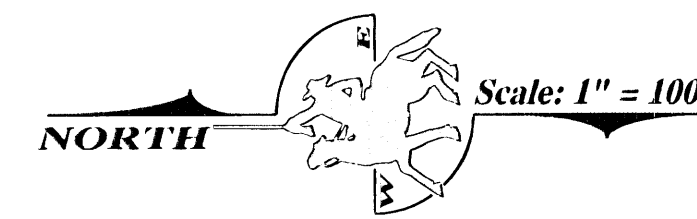
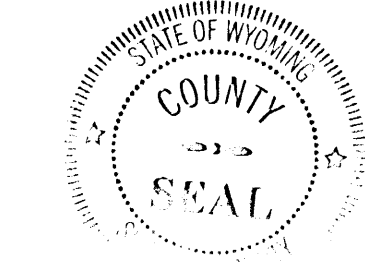
STATE OF WYOMING }
COUNTY OF SHERIDAN }

I HEREBY CERTIFY THAT THE ABOVE PLAT WAS FILED FOR RECORD IN
MY OFFICE AT 2:00 O'CLOCK P.M. ON Nov 3, 2005,
AND FILED IN DRAWER W, PLAT NUMBER 55.

INSTRUMENT No. 524397 FEE 50.00
COUNTY CLERK [Signature] DEPUTY COUNTY CLERK [Signature]

DECLARATION VACATING PREVIOUS PLATTING

THIS PLAT IS THE RE-SUBDIVISION OF A PORTION OF WESCO SUBDIVISION,
AS RECORDED IN BOOK W OF PLATS, PAGE 50, OF THE RECORDS OF THE SHERIDAN
COUNTY CLERK. ALL EARLIER PLATS OR PORTIONS THEREOF ENCOMPASSED
BY THE BOUNDARIES OF THIS PLAT ARE HEREBY VACATED.



LEGEND

- SET REBAR AND 2" ALUMINUM CAP - PE/LS 3864
 - FOUND 2" IRON PIPE
 - ◇ FOUND REBAR & CAP LS 102
 - ◆ FOUND BRASS CAP LS 102
 - △ ALUMINUM CAP LS 2615
 - BRASS CAP LS 2615
 - FOUND RIGHT OF WAY MONUMENT
- SECTION LINE
 - - - 1/4 SECTION LINE
 - SUBDIVISION BOUNDARY LINE
 - EASEMENT (UTILITY, IRRIGATION, DRAINAGE)
 - EXISTING RIGHT-OF-WAY LINE

NOTES:

- BASIS OF BEARING: WYOMING STATE PLANE COORDINATE SYSTEM (EAST CENTRAL ZONE) NAD 83
- EXISTING ZONING: B1 & B2

PREPARED FOR:
WESCO
BOX 6122
SHERIDAN, WYOMING 82801

PREPARED BY:
MC² ENGINEERING
1101 SUGARVIEW DR., STE. 201
SHERIDAN, WYOMING 82801

MENTOCK ENGINEERING
1030 NORTH MAIN ST.
No. 2 TAYLOR PLACE
SHERIDAN, WYOMING 82801